

# KUNARK HITECH MACHINING & SALES PVT.LTD.



Kunark House, 269, Kunark Marg, Kaman Bhiwandi Road, Kaman,

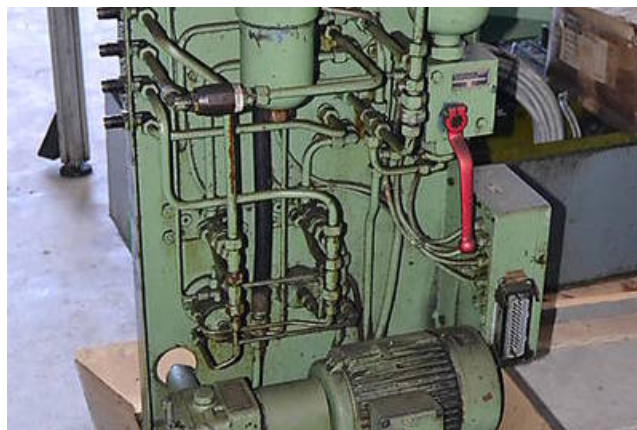
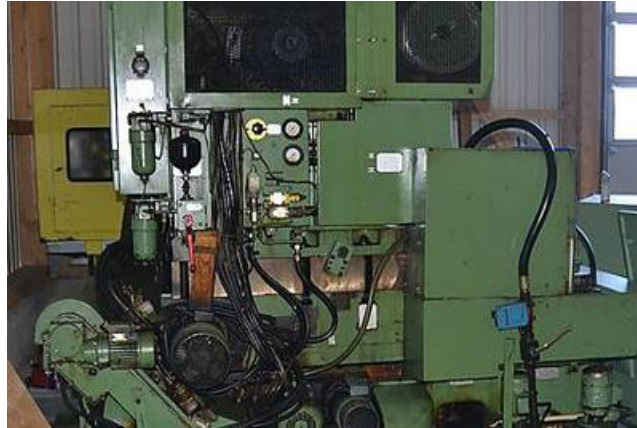
Vasai Road (East), Dist: Thane -401208, Maharashtra, India.

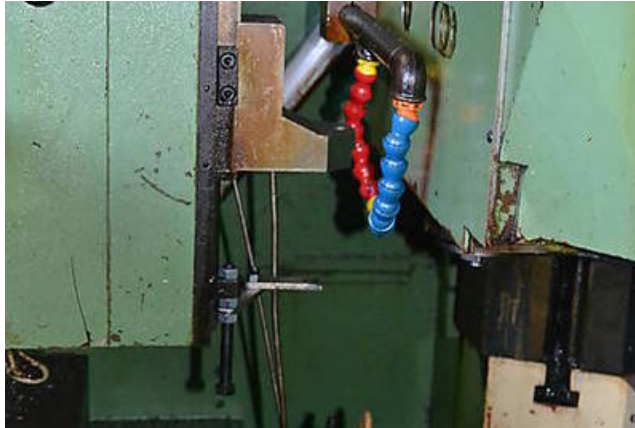
Mobile&Whatsapp: +91 9867973046, Mobile 2:- +91 7977043901

Goggle Map:- <https://maps.google.com/maps?q=19.372000+72.902095>

Email: [info@jkgears.com](mailto:info@jkgears.com), [dalbirbright@gmail.com](mailto:dalbirbright@gmail.com) website: [www.jkgears.com](http://www.jkgears.com)







<b>Machine Id</b>	<b>:- 959</b>	<b>Serial No</b>	<b>:-</b>
<b>Category</b>	<b>:- Gear Shapers</b>	<b>Model</b>	<b>:- LS 150</b>
<b>Country</b>	<b>:- Germany</b>	<b>Make</b>	<b>:- Lorenz</b>
<b>Type of Machine</b>	<b>:- high speed production gear shaper with tailstock</b>	<b>Year</b>	<b>:- 1990</b>
<b>Weight</b>	<b>:- 0.0</b>	<b>Dimensions</b>	<b>:-</b>
<b>Power</b>	<b>:-</b>	<b>Location</b>	<b>:-</b>

Specification :-

External gears, max. Ø	<b>150 mm</b>
Gear width, max.	<b>42 mm</b>
Module, max.	<b>3</b>
Internal gears, max. Ø	60 + cutter Ø mm
Internal gears, max. workpiece Ø, approx.	280 mm
Length of stroke	0 –50 mm
Adjustment of stroke	0 –70 mm
No. of double strokes per minute, approx.	355 / 375 / 400 / 1,060 / 1,120 / 1,200
Radial feed, infinitely variable	2.65 –100 mm/min
Shaping feed	160 –6,500 mm/min
Table size	250 mm
Table bore	100 mm
Distance between table and shaper head, approx.	265 mm
Total electrical load, approx.	25 kW - 380 V - 50 Hz
Weight	6,500 kg