

KUNARK HITECH MACHINING & SALES PVT.LTD.



Kunark House, 269, Kunark Marg, Kaman Bhiwandi Road, Kaman,

Vasai Road (East), Dist: Thane -401208, Maharashtra, India.

Mobile&Whatsapp: +91 9867973046, Mobile 2:- +91 7977043901

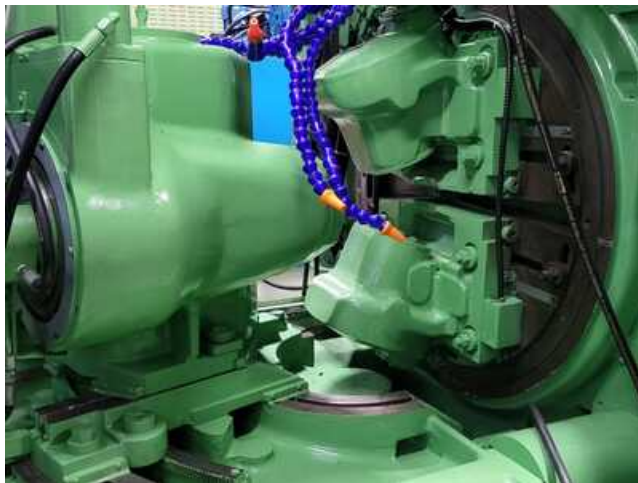
Goggle Map:- <https://maps.google.com/maps?q=19.372000+72.902095>

Email: info@jkgears.com, dalbirbright@gmail.com website: www.jkgears.com

















Machine Id	:- 1347	Serial No	:-
Category	:- Gear Related Machines	Model	:- 104 CNC
Country	:- United States	Make	:- Gleason
Type of Machine	:- CNC Coniflex Straight Bevel Generator With GE FANUC SERIES O-GC System	Year	:-
Weight	:- 0.0	Dimensions	:-
Power	:-	Location	:- Mumbai Warehouse,India

Specification :-

CNC Coniflex Straight Bevel Generator With GE FANUC SERIES O-GC System

Hydraulic Double-Acting Chucking Mechanism (Less Draw-in-Bar and Nut)

Self-Contained Hydraulic System

Self-Contained Coolant System

Workhead Brake

Full Guards Cover

Full Compliment of Electrics (Motor/Controls)

SPECIFICATIONS:

Cone Distance: 0 to 4-1/2'

Pitch Angle: 84 deg. 18 min. (max); 5 deg. 42 min. (min)

Extreme Ratio: 10-to-1

Pitch Diameter: 10-to-1 ratio; 8-1/2' (max)

Pitch Diameter: 1-to-1 ratio; 6' (max)

Diametral Pitch (coarsest): 3 DP

Diametral Pitch (finest): 20 DP

Face Width: 1-3/8' (max)

Index Range: 9 to 93 inclusive, and most numbers up to 175

Pressure Angles: 20, 22-1/2 & 25 deg.

Diameter of Taper Hole at Large : 3-29/32'

Taper per Foot: 39/64'

Depth of Taper: 6'

Diameter of Hole Through: 2-7/16'

Spindle Nose to Machine Center: 1-1/2' to 9'

Cutter Speeds: 98 to 286 (feet per minute)

Feeds: 4.2 to 69.2 (seconds per tooth)

Main Motor: 5 HP - 480V - 1800 RPM - 60 Hz - 3 PH