

# KUNARK HITECH MACHINING & SALES PVT.LTD.



Kunark House, 269, Kunark Marg, Kaman Bhiwandi Road, Kaman,

Vasai Road (East), Dist: Thane -401208, Maharashtra, India.

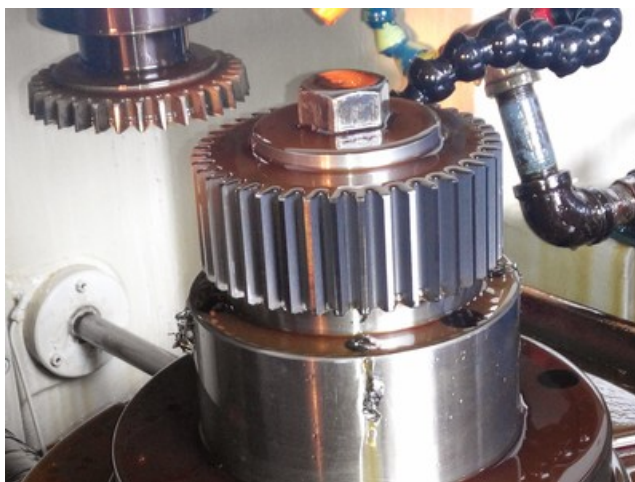
Mobile&Whatsapp: +91 9867973046, Mobile 2:- +91 7977043901

Goggle Map:- <https://maps.google.com/maps?q=19.372000+72.902095>

Email: [info@jkgears.com](mailto:info@jkgears.com), [dalbirbright@gmail.com](mailto:dalbirbright@gmail.com) website: [www.jkgears.com](http://www.jkgears.com)







<b>Machine Id</b>	<b>:- 1177</b>	<b>Serial No</b>	<b>:-</b>
<b>Category</b>	<b>:- Gear Related Machines</b>	<b>Model</b>	<b>:- Genetron</b>
<b>Country</b>	<b>:- United Kingdom</b>	<b>Make</b>	<b>:- Sykes</b>
<b>Type of Machine</b>	<b>:- CNC Gear Shaper Machine</b>	<b>Year</b>	<b>:-</b>
<b>Weight</b>	<b>:- 0.0</b>	<b>Dimensions</b>	<b>:-</b>
<b>Power</b>	<b>:-</b>	<b>Location</b>	<b>:- Mumbai Warehouse,India</b>

Specification :-

**General Data:**

**Work Piece: Maximum diameter –external 400**

**Maximum diameter –internal 240 + cutter dia**

**Maximum Pitch 6 Mod**

**Maximum helix a LH &RH 450**

**Capacity: Cutter stroke length 70**

**Maximum face width 64**

**Cutter spindle speeds up to 1500 s.p.m**

**Maximum centre distance- 260 forwards**

**cutter to work 120 backwards**

**Cutter spindle shoulder to table top 202(+ -) 13  
(mid Stroke)**

**Cutter: Nominal diameter 125**

**Cutter bore 44,45 dia.**

**Machine Dimensions: Cutter spindle diameter 90**

**Work Table diameter 250**

**Table bore diameter 100**

**Cutter wormwheel P.C.D 270**

**Table Workwheel P.C.D 270**

**Feeds: Rotary feed –100 cutter 0, 05-2,5**

**Radial Feed 0, 02-0,2**

**Motors: Main Drives –Simplatrol/ Lienze**

**D.C. Shunt wound motor**  
**GFQ112 440VA B3 + Brake**  
**20kw at 3000 RPM**  
**3 kw at 450 RPM**  
**Fan Motor 415V/3/50 GFQ112/1**  
**Axis drives- Contraves**  
**Cutter &Work C404-OSH-05-04-F4**  
**CRO /LT/PR1:1.8**  
**Infeed C403-OSH-02-01-F4**  
**CRO /LT/PR2.5:1**  
**Motors: Continued**  
**Lubrication - Brook**  
**2.2 kw 1450 RPM**  
**Frame D1005D**  
**Coolant - ASEA**  
**0.25 kw 1450 RPM**  
**Frame MT63B**  
**Swarf Screw - Normand**  
**1/8 H.P. 1800 R.P.M**  
**Frame SW479/F1**

**Swarf elevator - Normand**  
**1/8 H.P. 1800 R.P.M**  
**Frame SW479/F1**  
**Overall Dimensions: Floor area 3385 X 2860**  
**Height 3080**  
**Length, Machine 2250**  
**Width, Machine 1550**  
**Weight, Machine 6600 kg**  
**Coolant Capacity 140 Litres**  
**Lubricant capacity 60 Liters**