

KUNARK HITECH MACHINING & SALES PVT.LTD.



Kunark House, 269, Kunark Marg, Kaman Bhiwandi Road, Kaman,

Vasai Road (East), Dist: Thane -401208, Maharashtra, India.

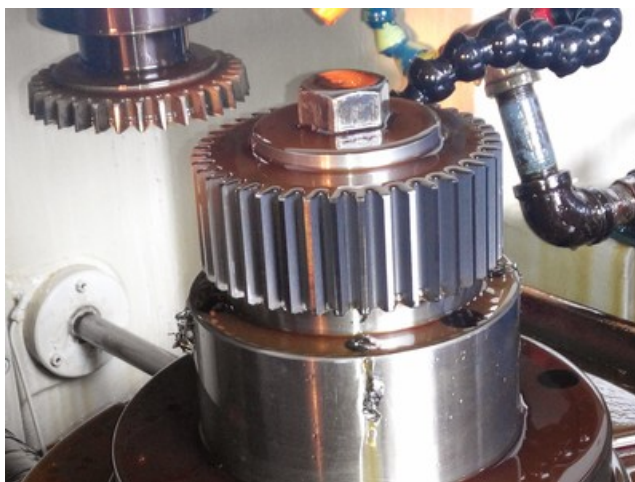
Mobile&Whatsapp: +91 9867973046, Mobile 2:- +91 7977043901

Goggle Map:- <https://maps.google.com/maps?q=19.372000+72.902095>

Email: info@jkgears.com, dalbirbright@gmail.com website: www.jkgears.com







Machine Id	:- 1176	Serial No	:-
Category	:- Gear Shapers CNC	Model	:- Genetron
Country	:- United Kingdom	Make	:- Sykes
Type of Machine	:- CNC Gear Shaper Machine	Year	:-
Weight	:- 0.0	Dimensions	:-
Power	:-	Location	:- Mumbai Warehouse,India

Specification :-

General Data:

Work Piece: Maximum diameter –external 400

Maximum diameter –internal 240 + cutter dia

Maximum Pitch 6 Mod

Maximum helix a LH &RH 450

Capacity: Cutter stroke length 70

Maximum face width 64

Cutter spindle speeds up to 1500 s.p.m

Maximum centre distance- 260 forwards

cutter to work 120 backwards

**Cutter spindle shoulder to table top 202(+ -) 13
(mid Stroke)**

Cutter: Nominal diameter 125

Cutter bore 44,45 dia.

Machine Dimensions: Cutter spindle diameter 90

Work Table diameter 250

Table bore diameter 100

Cutter wormwheel P.C.D 270

Table Workwheel P.C.D 270

Feeds: Rotary feed –100 cutter 0, 05-2,5

Radial Feed 0, 02-0,2

Motors: Main Drives –Simplatrol/ Lienze

D.C. Shunt wound motor
GFQ112 440VA B3 + Brake
20kw at 3000 RPM
3 kw at 450 RPM
Fan Motor 415V/3/50 GFQ112/1
Axis drives- Contraves
Cutter &Work C404-OSH-05-04-F4
CRO /LT/PR1:1.8
Infeed C403-OSH-02-01-F4
CRO /LT/PR2.5:1
Motors: Continued
Lubrication - Brook
2.2 kw 1450 RPM
Frame D1005D
Coolant - ASEA
0.25 kw 1450 RPM
Frame MT63B
Swarf Screw - Normand
1/8 H.P. 1800 R.P.M
Frame SW479/F1

Swarf elevator - Normand
1/8 H.P. 1800 R.P.M
Frame SW479/F1
Overall Dimensions: Floor area 3385 X 2860
Height 3080
Length, Machine 2250
Width, Machine 1550
Weight, Machine 6600 kg
Coolant Capacity 140 Litres
Lubricant capacity 60 Liters