









Maschinenbild to the drawing Bild der Eingründe	parts of the machine no. of maintenance location description of maintenance location	lubrication Zertragsrechnung			hydraulic - aggregate Hydraulikaggregat			control aggregate Kontrollaggregat			check Sonderliste
		1	2	3	4	5	6	7	8	9	
Flächen	check										see maintenance unit of producer nach Wartungsan- weisung des Herstellers
Zylinder und Ventile	check and refill if necessary	500		500							
Belegger	activate										
Aufbau	top up										
Stangen und Arme	oil seal note		4000		4000						
Austausch	exchange					2000					
Schleifrollen	lubricate	50 20 40	0 40	50 10 40	0 40	100 40	1 10 1				
Behälterkapazität	capacity of the reservoir		37 l		50 l						

1. Ölstand bei elektrischer Anzeige überprüfen oder Ölstandfest einstellen
reservoir oil level when indicated or level fixed by change

2. Filterwechsel bei Anzeichen für Verschmutzung oder Ölstandfest einstellen
filter change at pollution or level fixed according to pollution indicator

3. Frostschutz bei Frostschutzmittel nach Herstellerangaben
frost protection check at Frostschutzmittel according to manufacturer's instructions

4. Hydrauliköl bei Ölstandfest bei "1" ablesen
hydraulic oil level at "1" when indicated by oil level indicator

5. Achtung: Kältefilter bei Verschmutzung austauschen
attention: cold filter change at pollution indicator

6. Service nach Betriebsanleitung warten
attend gear box according to the service manual

7. CE-Kennzeichnung prüfen
CE mark check according to maintenance manual

8. CE-Kennzeichnung prüfen
CE mark check according to maintenance manual

9. CE-Kennzeichnung prüfen
CE mark check according to maintenance manual

Interfaced Service sequence in operation hours
Achtung: Wartungsintervalle in Betriebsstunden

Produktionsnr.: 1053654-0
Ser.-Nr.: 1053654-0
Fabr.-Jahr: 1998
Fabr.-Ort: S. 1053654-0
Fabr.-Ort: S. 1053654-0

500	500 Z	see maintenance unit of producer nach Wartungsanweisung des Herstellers
-25°C protection 40 % antifrost		
-25°C Frostschutz 40 % Frostschutzmittel	50 l	

EMAG	
MASCHINE TYPE	VSC 500
COMMISSION NO.	M500.07896
YEAR	1998
MASCHINE-NO.	
EL-DIAGRAM 18.700.0840.0080	
CUSTOMER'S INVENTORY NO.	
CURRENT SUPPLY	3 -
FREQUENCY	50 HZ
WORKING VOLTAGE	415 V
CONTROL VOLT GEN	24 V
CONTR. VOLT VALV	24 V
CONNECTION	55 KW
RATED CURRENT	98 A
SUPPLY FUSE	125 A
LIGHT-CONNECTION	24 V 1x18 W
TOTAL WEIGHT	KG

Hersteller bei Verschmutzungsausschlag reinigen
clean according to pollution indicator

Betriebsanleitung warten
attend gear box according to the service manual

VERTEILER nach Wartungsanleitung warten
on distributor check according to maintenance manual

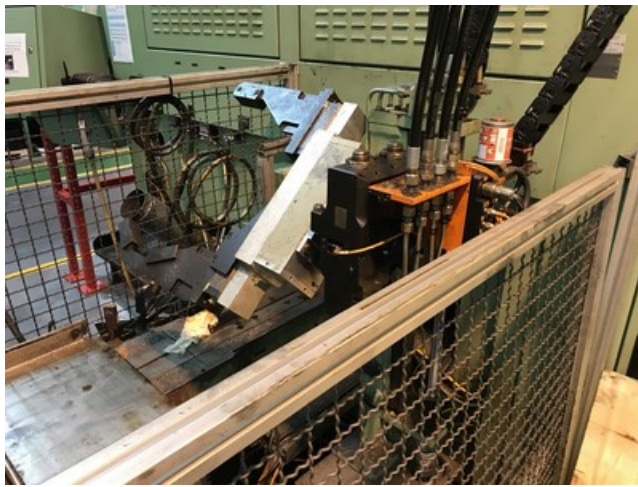
ent Service sequence in operation hours
Wartungsintervalle in Betriebsstunden

Produktion
Produktionsnr.: M500.064472956
Ser.-Nr.: 1053654-0
Fabr.-Jahr: 1998
Fabr.-Ort: S. 1053654-0
Fabr.-Ort: S. 1053654-0

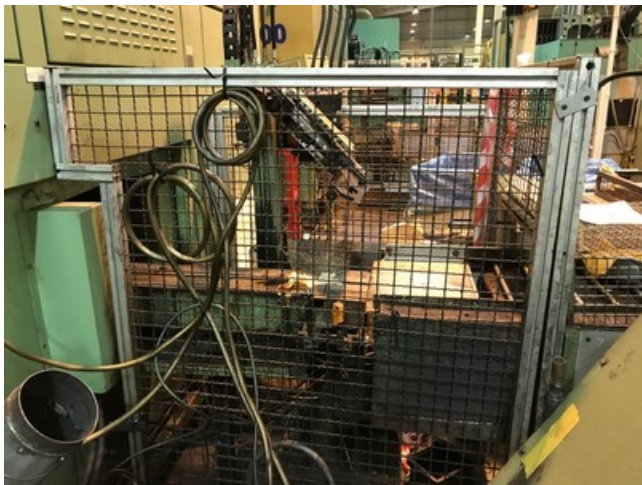
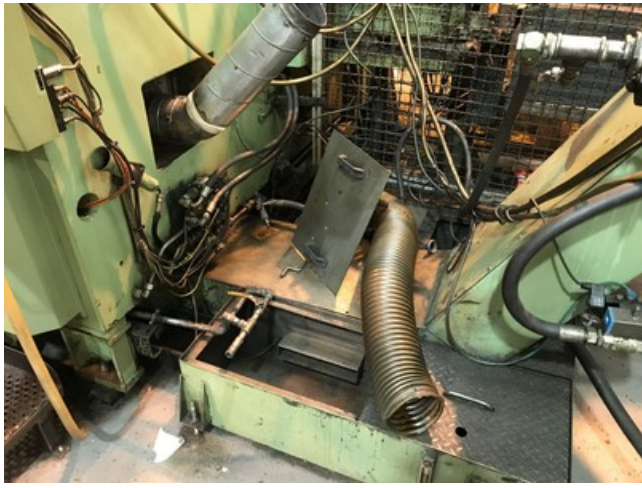




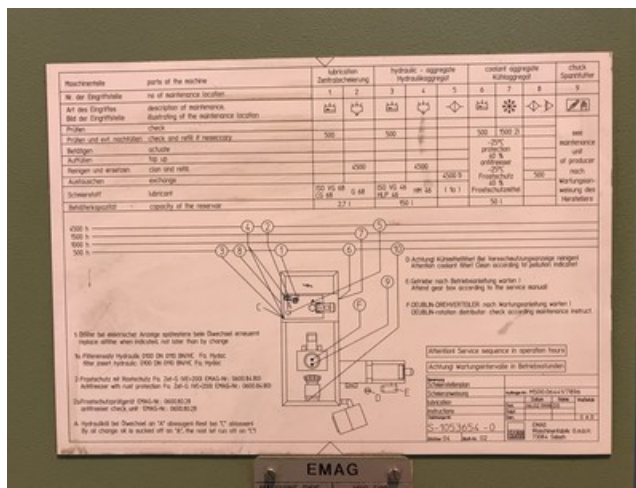












Machine Id	:- 1121	Serial No	:- M50007896 AND M50006441 (CHOICE OF TWO MACHINES)
Category	:- Vertical Turning Lathe (VTL) All Types Conventional & Cnc	Model	:- VSC500
Country	:- Germany	Make	:- EMAG
Type of Machine	:- CNC vertical turning machine with an inverted work spindle that traveled the main axes	Year	:- 1998
Weight	:- 0.0	Dimensions	:-
Power	:-	Location	:-

Specification :-

Characteristics

- Max. turning \varnothing : 520 [mm]
- Strokes (X/Z) : 1000 / 400 [mm]
- Max. push on X and Z : 1100 [daN]
- Quick feeds (X/Z) : 45 / 30 [m/min]
- Ball screw diameter (X/Z) : 50 [mm]
- Spindle nose : A2-11
- Spindle motor power : 71 [kW]
- Spindle speed : 0 - 3400 [Rpm]
- Max. chuck torque : 750 [Nm]
- Number of positions on turret : 12
- Number of motorized positions : 12
- Tool-holder type : VDI50

- Machine alone dimensions : 4.050 x 1.960 [mm]
- Installation dimensions : 8.500 x 5.000 [mm]
- Machine weight : 13.500 [kg]
- Installed power : 45 [kW]
- Electric supply : 400 V, 50 Hz

Equipment

- CN SIEMENS 840D
- Interface : RS232 / RJ45 / USB
- Touch part sensor Marposs
- 1 fixed tool support on table : Capto C6
- Lubricating tank
- HP coolant tank : 23 [bars]
- Cooling tank
- Chip conveyor KNOLL
- Part conveyor capacity : 70 - 320 [mm]
- Rotary tool holders number : 6
- Fixed tool holders number : 6
- Chuck 3 jaws Forkhardt Ø: 400 [mm]