

# KUNARK HITECH MACHINING & SALES PVT.LTD.

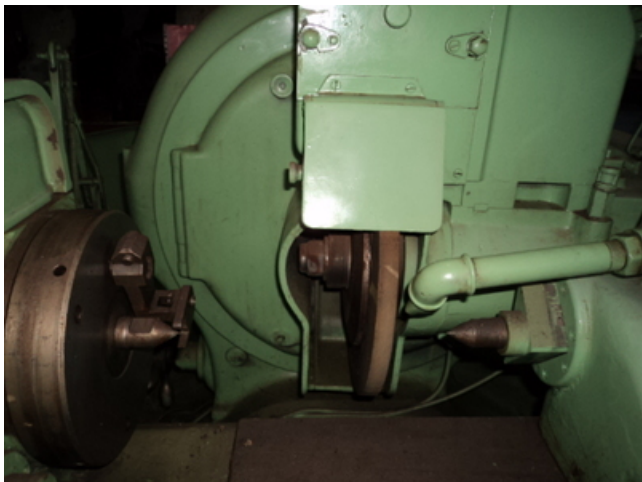
Kunark House, 269, Kunark Marg, Kaman Bhiwandi Road, Kaman,

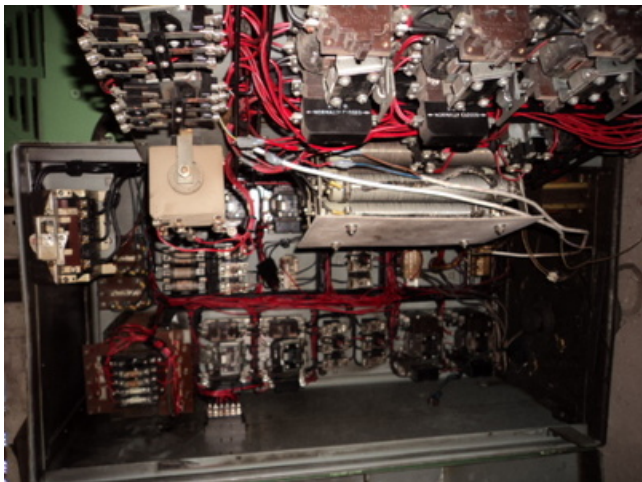
Vasai Road (East), Dist: Thane -401208, Maharashtra, India.

Mobile: (+91) 9867973046 Factory: 0250-6454895

Email: [info@jkgears.com](mailto:info@jkgears.com), [dalbirbright@gmail.com](mailto:dalbirbright@gmail.com) website: [www.jkgears.com](http://www.jkgears.com)







Machine Id	:- 985	Serial No	:-
Category	:- Thread / Worm Grinders	Model	:- 39
Country	:- England	Make	:- Matrix
Type of Machine	:- Thread Grinder Machine	Year	:- 0
Weight	:- 0.0	Dimensions	:-
Power	:-	Location	:- Mumbai Warehouse, India

Specification :-

## **No. 39 Universal Thread Grinding Machines**

These fully universal machine used conjunction with the wide range of ancillary equipment available are applicable to almost every aspect of precision thread grinding. Annular forms can also be ground. Large quantity production or specialized applications can be undertaken with equal facility. Plunge or traverse grinding techniques can be employed, using single or multi-ribbed grinding wheels. Threads of practically any from single or multi –start, right or left hand, parallel or tapered can be ground in addition, worm forms can also be produced. A relieving mechanism incorporated in the basic machine enables taps, thread milling cutters and similar components to e ground. So supplement inherent versatility, a large range of wheel forming equipment is available.

### **Specification:**

#### **No.39 machine**

Maximum length between centres	508mm 20in
Maximum length ground at one setting	482mm 19in
Maximum diameter admitted	254mm 10in
maximum diameter swing into gap	305mm 12in
maximum helix angle	45 right or left hand
Pitch range	0,42 to 305mm lead 60tpi to 12in lead
Workhead speeds (forward)20	0.2 to 60 rpm
Return speeds	25.4 80 rpm or same as forward speed
Grinding wheel spindle speeds	850 or 1310 or 1540 rpm
Grinding wheel size (standard)	406x25x205mm bore 16x1x8in bore
Maximum taper on diameter	1 in 8                                  1 in 12
Relief (variable up to )	5mm 0.2 in
Maximum chaser length	254mm 10in
Wheelhead motor	4.4/2.2kw 6/3 hp
Crushing motor	0.25 kw 1/3 hp
Gearbox motor	0.55kw 3/4 hp